

SOLAR AIR CONDITIONERS						
Model No.		TKF(R)-26GW/BP	TKF(R)-35GW/BP	TKF(R)-52GW/BP	TKF(R)-72GW/BP-P	
Power Supply: 220-240VAC, 1PH, 50Hz/60HZ						
Performance						
Capacity	Cooling	Btu/h	9000(4100~12000)	12000(4100~15000)	18000(6200-20000)	24000(8500-24000)
		W	2600(1200~3500)	3500(1200~4300)	5000(1800~6000)	7200(2500~7200)
	Heating	Btu/h	1000(4100~12600)	3000(4100~15500)	9000(6000-23000)	27000(9000-27000)
		W	2900(1200~3700)	3800(1200~4500)	5500(1800~7000)	8000(2500~8000)
Noise	Indoor	dB(A)	≤40	≤42	≤44	≤42
	Outdoor	dB(A)	≤50	≤52	≤54	≤56
Air Circulation		m³/h	450	550	800	1050
Suitable Area		m²	11~17	15~23	26-36	32-43
EER	W/W		5.35	5.33	5.3	4.01
	Btu/h/w		18.2	18.2	18	14
Power Consumption						
Power Input	Cooling	W	650(500~1300)	850(400~1400)	1250(450-2100)	1700(550-2700)
	Heating	W	700(320~900)	900(450~1300)	1300(480-2200)	1800(550-2700)
Rated Current	Cooling	A	2.95~3.50	3.64~4.66	5.53~5.92	6.43~6.82
	Heating	A	2.95~3.55	3.64~4.77	5.53~6.03	6.73~6.98
Vacuum Tube	Diameter*Length*Pcs		47mm*500mm*9	47mm*500mm*10	47mm*620mm*11	1000*550*90
Model No.		TKF(R)-26GW/BP	TKF(R)-35GW/BP	TKF(R)-50GW/BP	TKF(R)-72GW/BP-P	
Dimensions						
Indoor Unit	Net	mm	745*255*195	775*260*210	985*325*230	985*325*230
	Shipping	mm	780*240*305	840*325*265	1070*285*395mm	1070*285*395mm
Outdoor Unit	Net	mm	790*260*540	790*260*540	850*300*755	850*300*755
	Shipping	mm	910*370*610	910*370*610	950*400*770	950*400*770
Water Tank	Shipping	mm	910*400*330	910*400*330	980*400*370	980*400*370
Vacuum Tube	Shipping	mm				
samples	Shipping	mm	990*870*750		1120*860*890	1145*620*110
Weight						
Indoor Unit	Net/Gross	kg	8/10	10.5/13	17/18.5	17/18.5
Outdoor Unit	Net/Gross	kg	29/34	38/40	50/52	50/52
Solar Collector	Net/Gross	kg	13/15	13/15	16/17	15/18
Loading Qty	in 20feet	sets	72	66	50	50
	40GP	sets	150	145	102	102
	40HQ	sets	162	162	120	120
Quotation						
Power Supply: 220-240VAC, 1PH, 50/60Hz						
Freon:R410A						
Cooling only	CIF Miami	USD	683	811	1020	1356
Cooling &Heating	CIF Miami	USD	720	832	1056	1416

Note:only compressor is DC,fan motor is AC,if u want all DC,then we can manufacture too,but the price is higher than above,and the MOQ is 1 20feet container.

REMARKS:

Above **Red Numbers** means the electrical heater is on.

Parameters in the form are measured in the rated working state according to GB/T7725-2004.

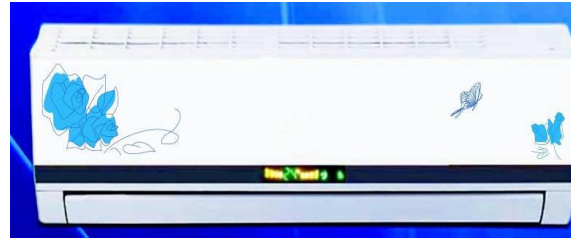
Changes may appear according to real working state.

Parameters may change due to the product improvement, please refer to the products nameplate.

PICTURES:



EM types



EM01 types



L types



EL types



EC types



Outdoor Unit



