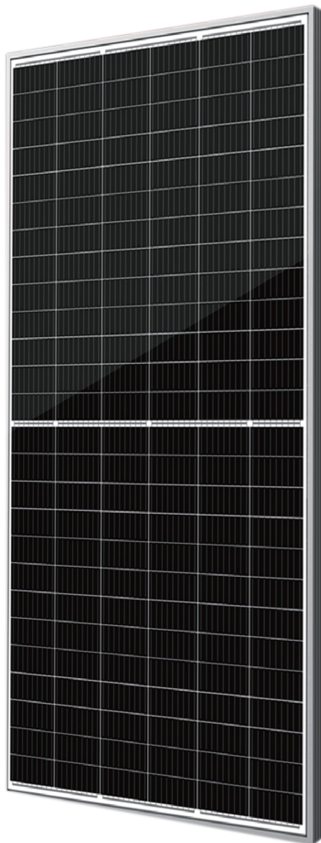


# Module HC 78M 440-445 Watt

MONO PERC HALF CELL MODULE

Positive power tolerance of 0~+3%

- Half Cell
- Mono PERC 78 Cell



## KEY FEATURES



### 9 Busbar Solar Cell

9 busbar solar cell adopts new technology to improve the efficiency of modules, offers a better aesthetic appearance, making it perfect for rooftop installation.



### High Efficiency

Higher module conversion efficiency (up to 20.38%) benefit from half cell structure (low resistance characteristic).



### PID Resistance

Excellent Anti-PID performance guarantee limited power degradation for mass production.



### Low-light Performance

Advanced glass and cell surface textured design ensure excellent performance in low-light environment.



### Severe Weather Resilience

Certified to withstand: wind load (2400 Pascal) and snow load (5400 Pascal).



### Durability Against Extreme Environmental Conditions

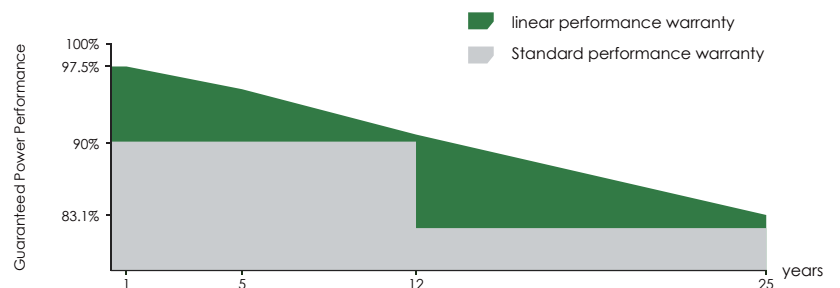
High salt mist and ammonia resistance.

## LINEAR PERFORMANCE WARRANTY

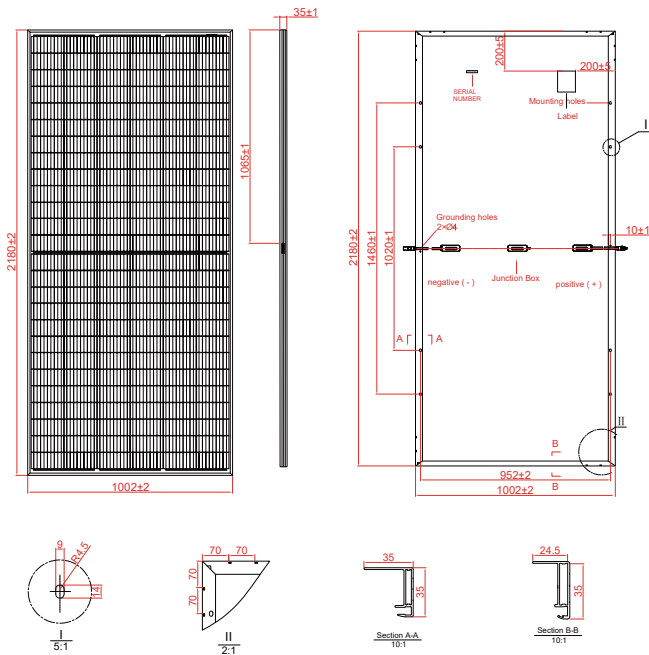
12 Year Product Warranty • 25 Year Linear Power Warranty

- ISO9001:2015 certified factory
- UL1703 certified product

Quality is our life

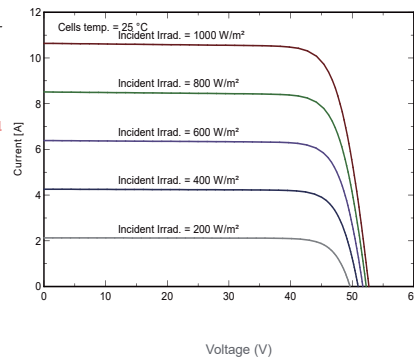


## Engineering Drawings

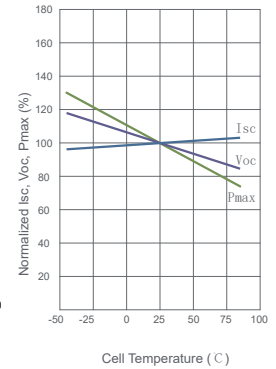


## Electrical Performance & Temperature Dependence

Current-Voltage Curves (440W)



Temperature Dependence of Isc, Voc, Pmax



## Mechanical Characteristics

Cell Type	Mono PERC 158.75×79.375mm
No. of Half-cells	156 (6×26)
Dimensions	2180×1002×35mm (85.83×39.45×1.37 inch)
Weight	24.0 kg (52.9 lbs)
Front Glass	3.2mm, Anti-Reflection Coating, High Transmission, Low Iron, Tempered Glass
Frame	Anodized Aluminium Alloy
Junction Box	IP67 Rated
Output Cables	TÜV 1x4.0mm², (+) 290mm, (-) 145mm or Customized Length

## Packaging Configuration

(Two pallets = One stack)

31 pcs/pallet, 62 pcs/stack, 806 pcs/53FT Truck

## SPECIFICATIONS

Module Type	SE-158*79-440M-156	SE-158*79-445M-156	SE-158*79-450M-156
	STC	STC	STC
Maximum Power (Pmax)	440W	445W	450W
Maximum Power Voltage (Vmp)	44.3	44.4	44.6
Maximum Power Current (Imp)	9.93	10.03	10.09
Open-circuit Voltage (Voc)	52.6	52.7	52.9
Short-circuit Current (Isc)	10.53	10.64	10.7
Module Efficiency STC (%)	20.14%	20.37%	20.60%
Operating Temperature (°C)		-40°C~+85°C	
Maximum System Voltage		1000VDC (IEC)	
Maximum Series Fuse Rating		20A	
Power Tolerance		0~+3%	
Temperature Coefficients of Pmax		-0.35%/°C	
Temperature Coefficients of Voc		-0.29%/°C	
Temperature Coefficients of Isc		0.048%/°C	
Nominal Operating Cell Temperature (NOCT)		45±2°C	

STC: Irradiance 1000W/m² Cell Temperature 25°C AM=1.5

NOCT: Irradiance 800W/m² Ambient Temperature 20°C AM=1.5 Wind Speed 1m/s

\* Power measurement tolerance: ± 3%