

# SEG-6MA-xxxWW

SERIES 6 INCH 72 CELLS



**SERAPHIM**  
ENERGY GROUP

## Safety



Resistance to salt mist corrosion at your request



Resistance to ammonia corrosion at your request



Product is certified by UL1703

## Reliability



Anti-PID products using advanced module technology



World 1st company to pass "Thresher Test" and "On-site Power Measurement Validation" certificate



Bankable products

## Performance



Withstand high system voltage up to 1500V to save BoS Cost



Outstanding power output capability at low irradiance

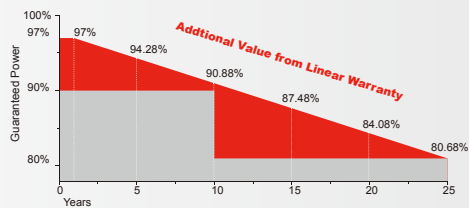


Withstand up to 2400Pa wind and 5400Pa snow loads(IEC), long lasting

# 360-375W PERC



## WARRANTY



**10**  
YEARS

Guarantee on product material and workmanship

**25**  
YEARS

Linear power output warranty

## MANAGEMENT SYSTEM

ISO 9001: Quality management system

ISO 14001: Standard for environmental management system

OHSAS 18001: International standard for occupational health and safety assessment system

## PRODUCT CERTIFICATES



## INSURANCE



Specifications are subject to change without notification SEG-DS-EN-2019V1.1 © Copyright 2019 Seraphim

**SERAPHIM ENERGY GROUP, INC.**

# SEG-6MA-XXXWW SERIES 6 INCH 72 CELLS



WW: WHITE BACK-SHEET / SILVER FRAME PRODUCTS

## Electrical Characteristics(STC)

Module Type	SEG-6MA-360WW	SEG-6MA-365WW	SEG-6MA-370WW	SEG-6MA-375WW
Maximum Power at STC - $P_{mp}$ (W)	360	365	370	375
Open Circuit Voltage - $V_{oc}$ (V)	47.4	47.6	47.8	48.0
Short Circuit Current - $I_{sc}$ (A)	9.70	9.78	9.88	9.96
Maximum Power Voltage - $V_{mp}$ (V)	38.5	38.7	38.9	39.1
Maximum Power Current - $I_{mp}$ (A)	9.36	9.44	9.52	9.60
Module Efficiency STC- $\eta_m$ (%)	18.55	18.81	19.07	19.33
Power Tolerance (W)	(0,+4.99)			
Maximum System Voltage (V)	1000 or 1500(UL)			
Maximum Series Fuse Rating (A)	20			
Fire Performance	Type2 or Type1(UL)			

## Electrical Characteristics(NOCT)

Module Type	SEG-6MA-360WW	SEG-6MA-365WW	SEG-6MA-370WW	SEG-6MA-375WW
Maximum Power at NOCT - $P_{mp}$ (W)	267	271	274	278
Open Circuit Voltage - $V_{oc}$ (V)	43.8	44.0	44.1	44.3
Short Circuit Current - $I_{sc}$ (A)	7.84	7.9	7.97	8.05
Maximum Power Voltage - $V_{mp}$ (V)	36.1	36.3	36.4	36.6
Maximum Power Current - $I_{mp}$ (A)	7.40	7.47	7.53	7.60

## Temperature Characteristics

Pmax Temperature Coefficient	-0.38 %/°C
Voc Temperature Coefficient	-0.28 %/°C
Isc Temperature Coefficient	+0.05 %/°C
Operating Temperature	-40~+85 °C
Nominal Operating Cell Temperature (NOCT)	45±2 °C

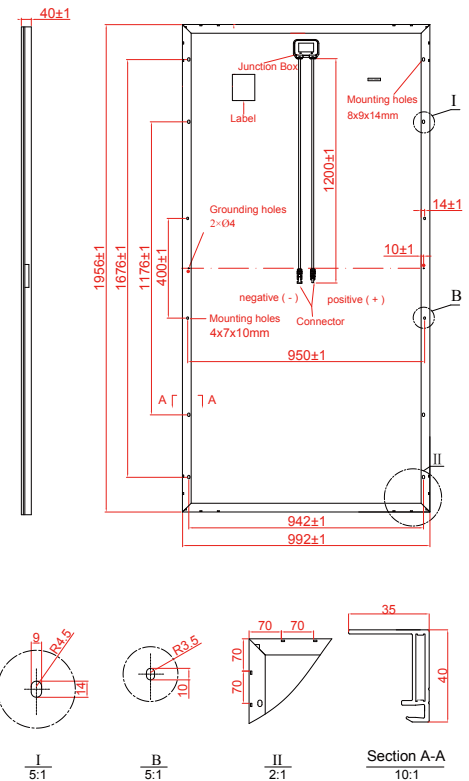
## Packing Configuration

	1956 x 992 x 40mm (77.01×39.06×1.58 inch)
Container	40'GP
Pieces per Pallet	26
Pallets per Container	24
Pieces per Container	624

## Mechanical Specifications

External Dimensions	1956 x 992 x 40 mm (77.01×39.06×1.58 inch)
Weight	21.5 kg (47.4 lbs)
Solar Cells	Monocrystalline, 6 inch (72pcs.)
Front Glass	3.2 mm AR coating tempered glass, low iron
Frame	Anodized aluminium alloy
Junction Box	IP67
Output Cables	12AWG, cable length:1200 mm
Connector	MC4 Compatible

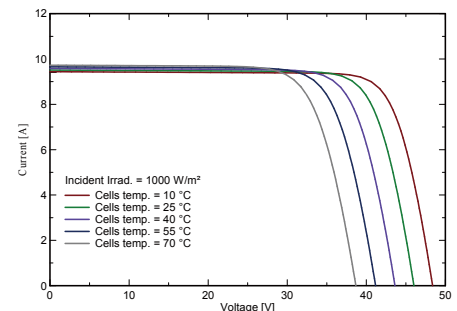
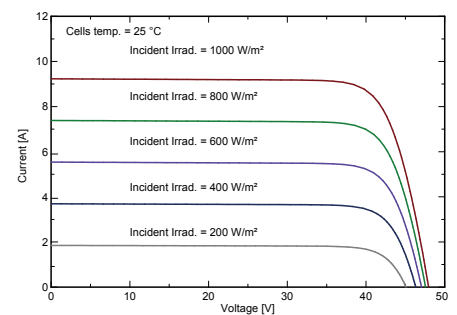
STC: Irradiance 1000 W/m<sup>2</sup>, module temperature 25°C, AM=1.5  
 NOCT: Irradiance 800 W/m<sup>2</sup>, ambient temperature 20°C, wind speed :1m/s  
 Specifications are subject to change without further notification.



\* All Dimensions in mm

\* The above drawing is a graphical representation of the product.

## I-V Curve



Specifications are subject to change without notification SEG-DS-EN-2019V1.1 © Copyright 2019 Seraphim

SERAPHIM ENERGY GROUP, INC.